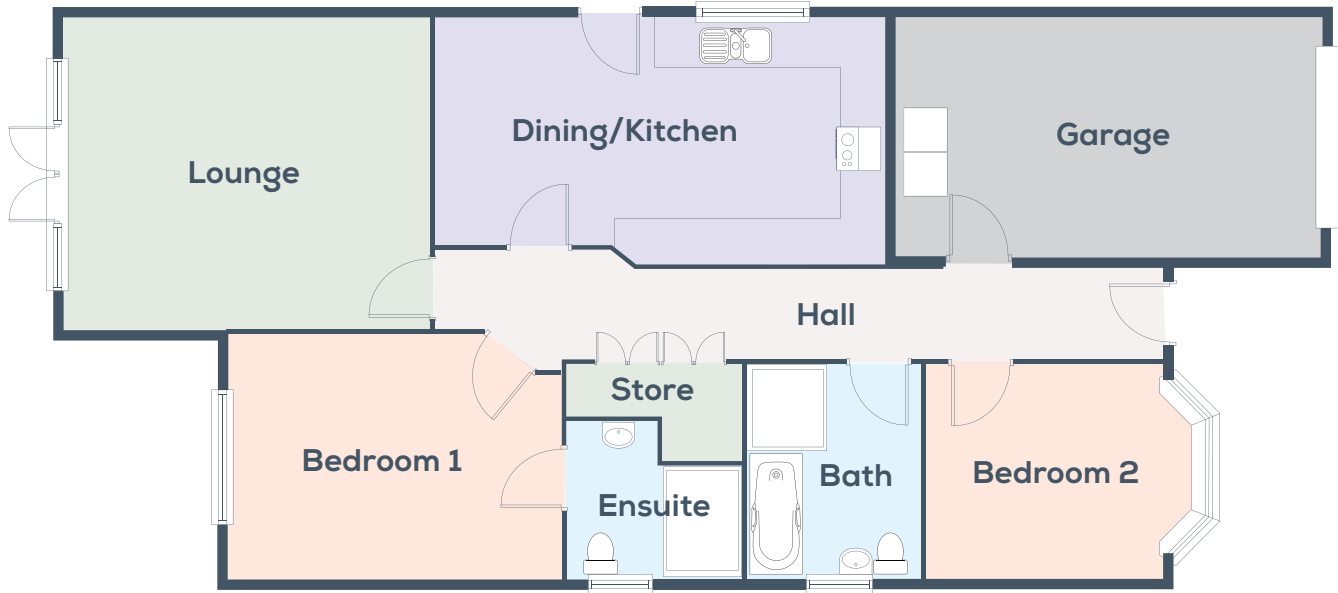




The Chatsworth - Plot 1/2/3



Lounge	16'4" x 14'0"	4.97m x 4.27m
Dining Kitchen	20'4" x 11'0" (Narrowing to 10'0")	6.2m x 3.4m (Narrowing to 3.1m)
Bedroom 1	15'0" x 11'0"	4.6m x 3.34m
En suite shower/WC	8'0" x 6'10" (Max dimensions)	2.43m x 2.1m
Bedroom 2	10'6" x 9'6" (Plus bay window)	3.22m x 2.91m
Bathroom	9'6" x 7'10"	2.91m x 2.4m
Integral Garage	19'0" x 10'6"	5.8m x 3.20m