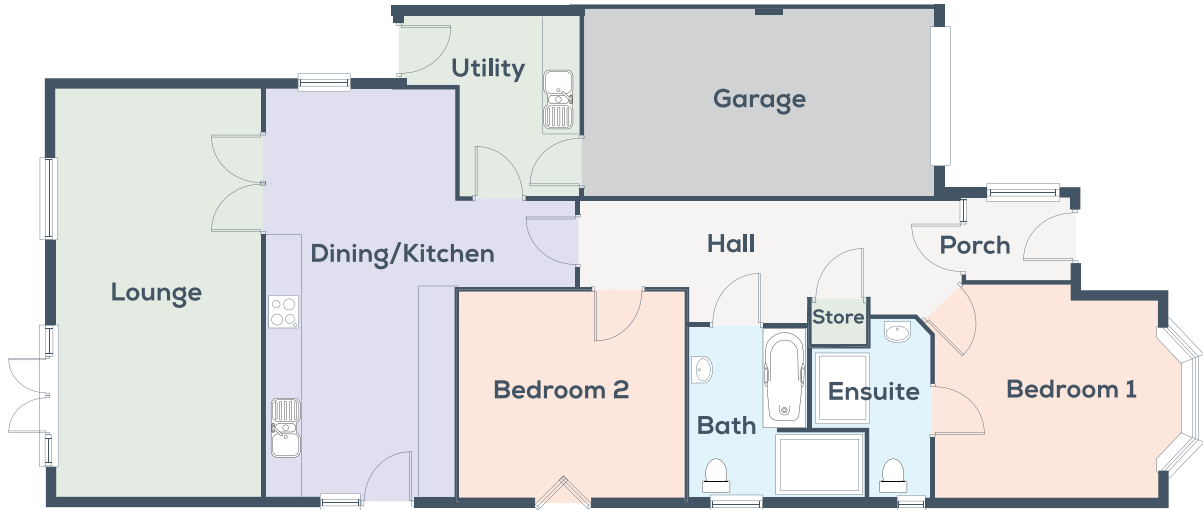




## The Sandringham - Plot 7



Lounge	22'6" x 11'3"	6.87m x 3.44m
Dining Kitchen	22'6" x 10'6"	6.87m x 3.20m
Utility Room	9'10" x 6'6"	3.00m x 2.00m
Bedroom 1	12'4" x 11'8"	3.75m x 3.55m (Plus bay window)
En suite shower/WC	9'8" x 6'7" (Max dimensions)	2.96m x 2.02m (Max dimensions)
Bedroom 2	12'7" x 11'4"	3.84m x 3.46m
Bathroom/WC	9'9" x 9'3" (Max dimensions)	2.98m x 2.83m (Max dimensions)
Integral Garage	19'4" x 10'3"	5.88m x 3.13m