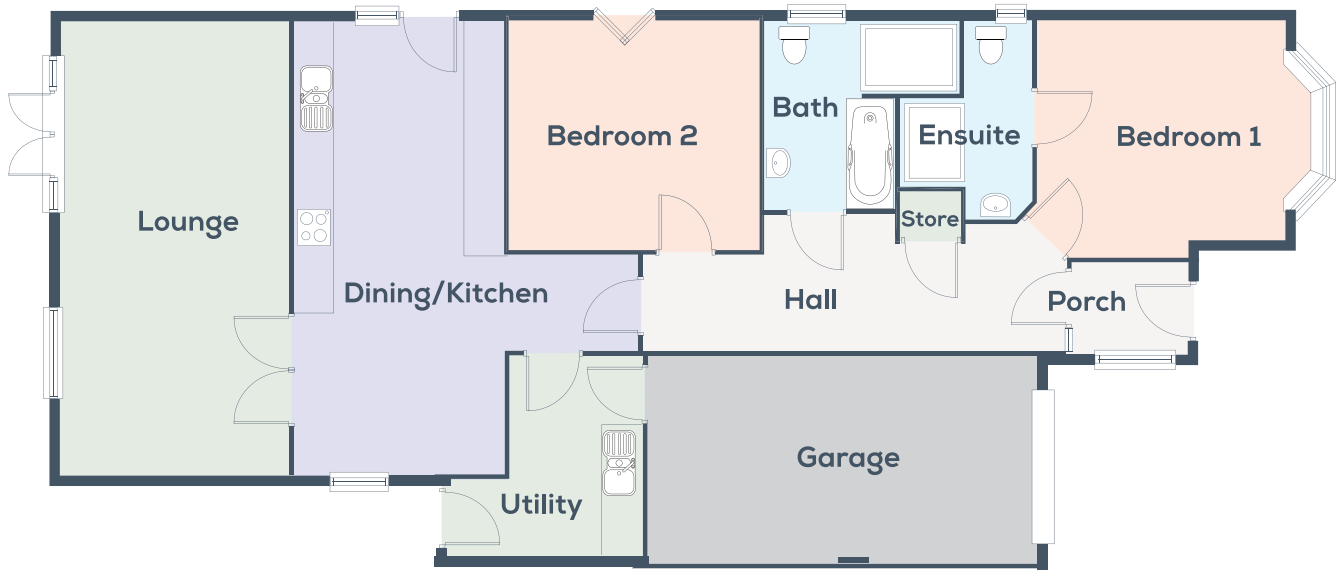




The Sandringham - Plot 5/6



Lounge	22'6" x 11'3"	6.87m x 3.44m
Dining Kitchen	22'6" x 10'6"	6.87m x 3.20m
Utility Room	9'10" x 6'6"	3.00m x 2.00m
Bedroom 1	12'4" x 11'8"	3.75m x 3.55m <small>(Plus bay window)</small>
En suite shower/WC	9'8" x 6'7" <small>(Max dimensions)</small>	2.96m x 2.02m <small>(Max dimensions)</small>
Bedroom 2	12'7" x 11'4"	3.84m x 3.46m
Bathroom/WC	9'9" x 9'3" <small>(Max dimensions)</small>	2.98m x 2.83m <small>(Max dimensions)</small>
Integral Garage	19'4" x 10'3"	5.88m x 3.13m